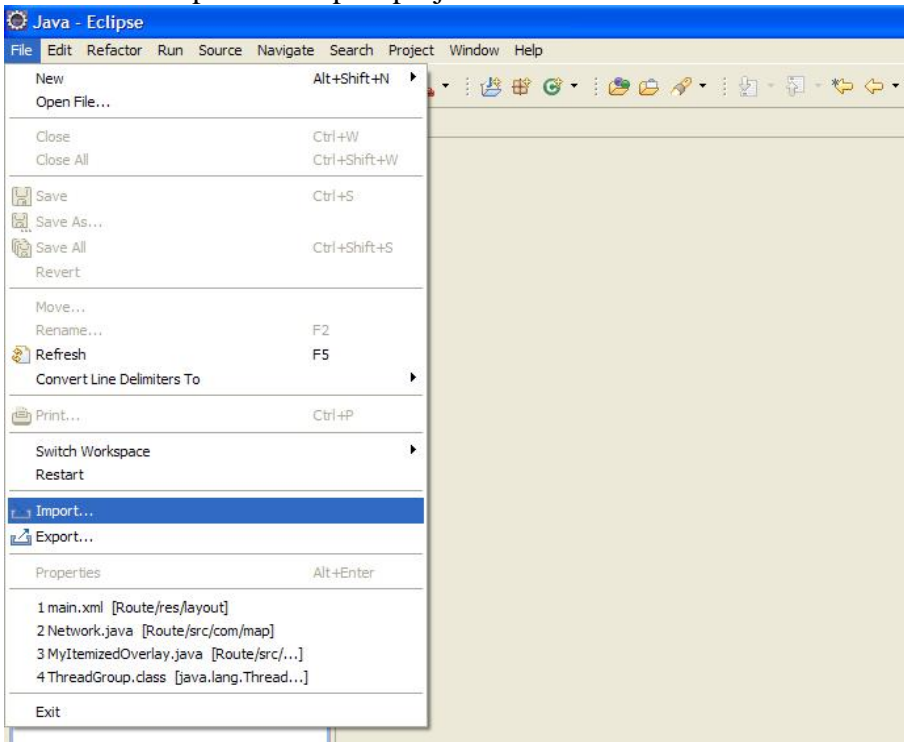


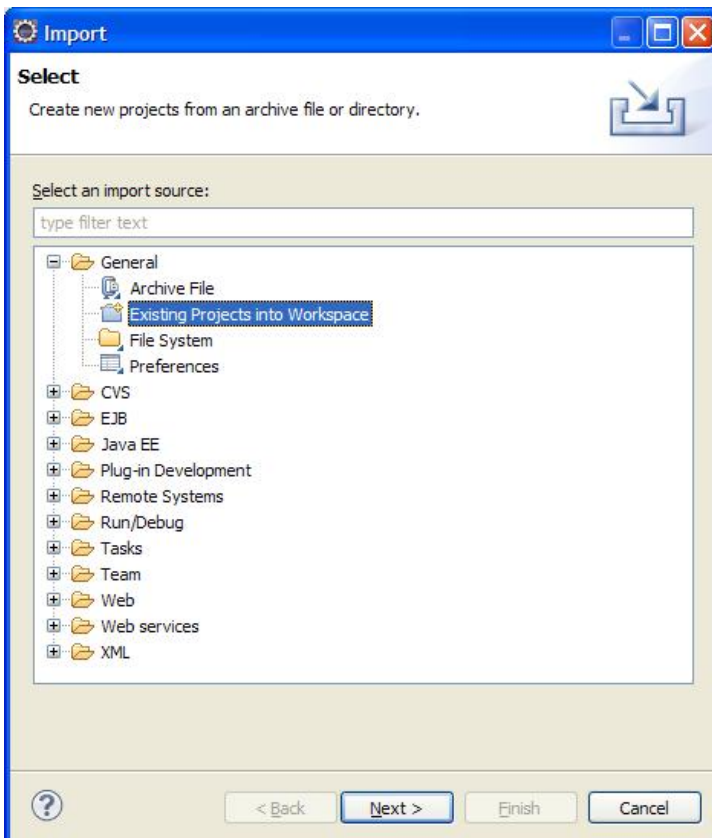
Installation instructions

Extract archive "Route.zip" to somewhere (workspace).

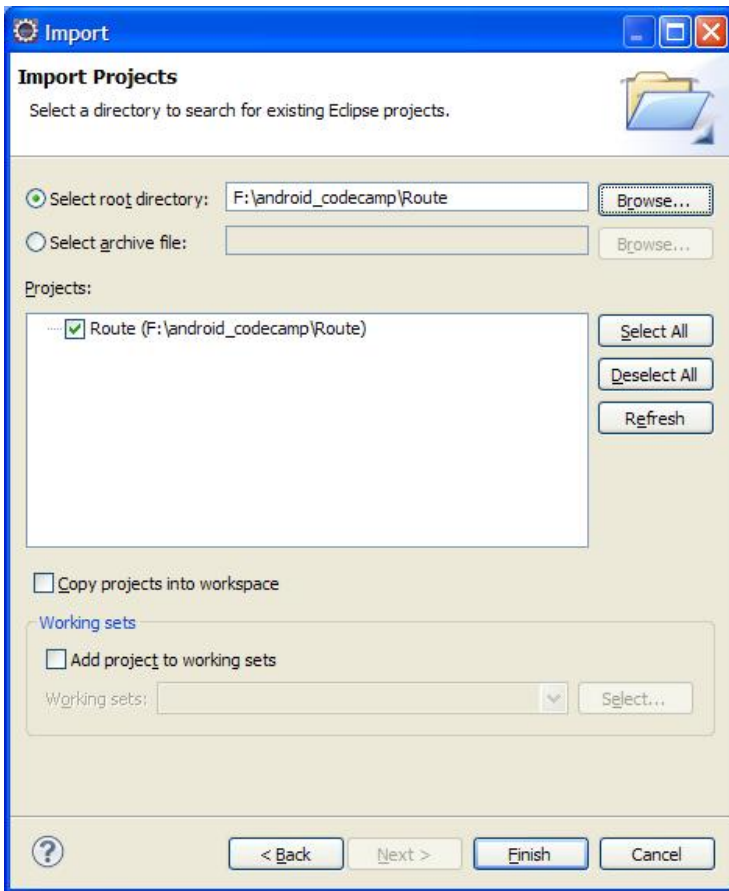
Then start Eclipse and import project.



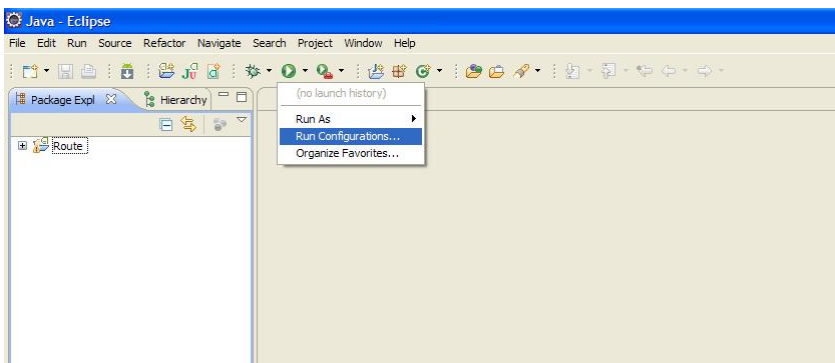
Here select "Existing Projects into Workspace" and select "Next" button.



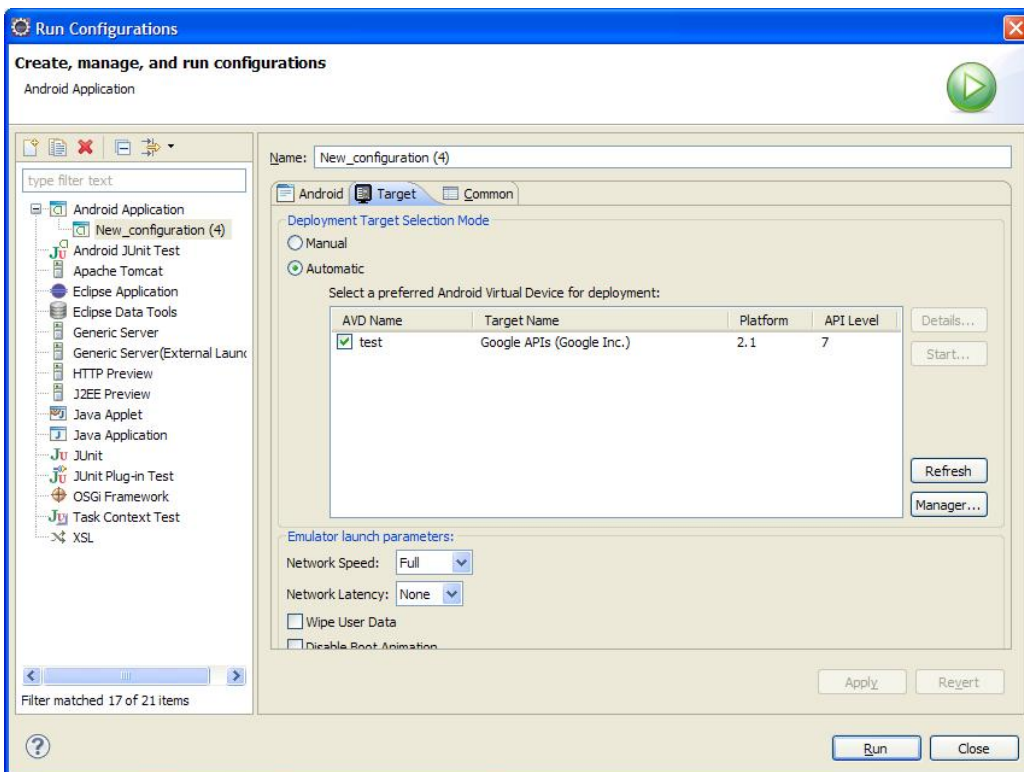
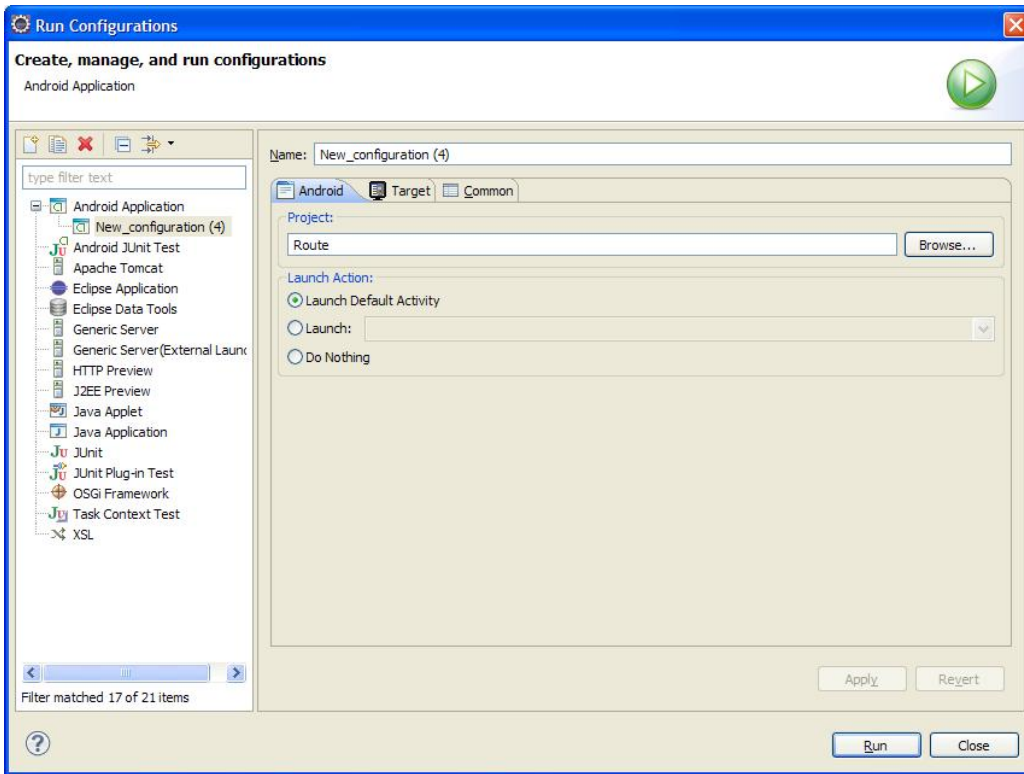
Then select root directory, where you extracted archive "Route.zip". And select "Finish" button.



Then need chose "Run Configuration".



Here need create new configuration for run this application as Google API.



If you can see map you need add Google Maps API and change "main.xml" in "layout".(See <http://mobiforge.com/developing/story/using-google-maps-android>)

